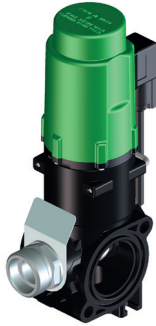
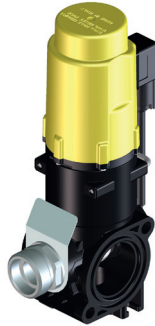


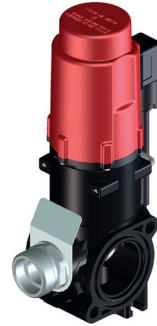
VALVOLE REGOLAZIONE M180 M180 PRESSURE REGULATOR



180.1910.10
HIGH FLOW 30 s



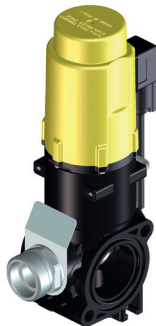
180.1910.13
HIGH FLOW 6 s



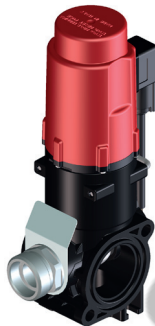
180.1910.13RO
HIGH FLOW 9.5 s



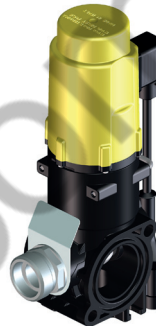
180.1910.13SS
HIGH FLOW 6 s
SMARTSPRAY



180.1910.14
LOW FLOW 6 s



180.1910.14RO
LOW FLOW 9.5 s



180.1910.14SS
LOW FLOW 6 s
SMARTSPRAY



180.1910.15
LOW FLOW 30 s

| CODICE code | CONTROLLO control | PORTATA flow rate l/min |
|----------------|--------------------------|-------------------------------|
| 180.1910.10 | Manuale - Manual | 145 - 60 |
| 180.1910.13 | Elettronico - Electronic | 145 - 60 |
| 180.1910.13RO | Elettronico - Electronic | 145 - 60 |
| 180.1910.13SS | Elettronico - Electronic | 145 - 60 |
| 180.1910.14 | Elettronico - Electronic | 80 - 20 |
| 180.1910.14RO | Elettronico - Electronic | 80 - 20 |
| 180.1910.14SS | Elettronico - Electronic | 80 - 20 |
| 180.1910.15 | Manuale - Manual | 80 - 20 |

